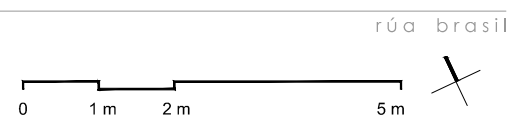
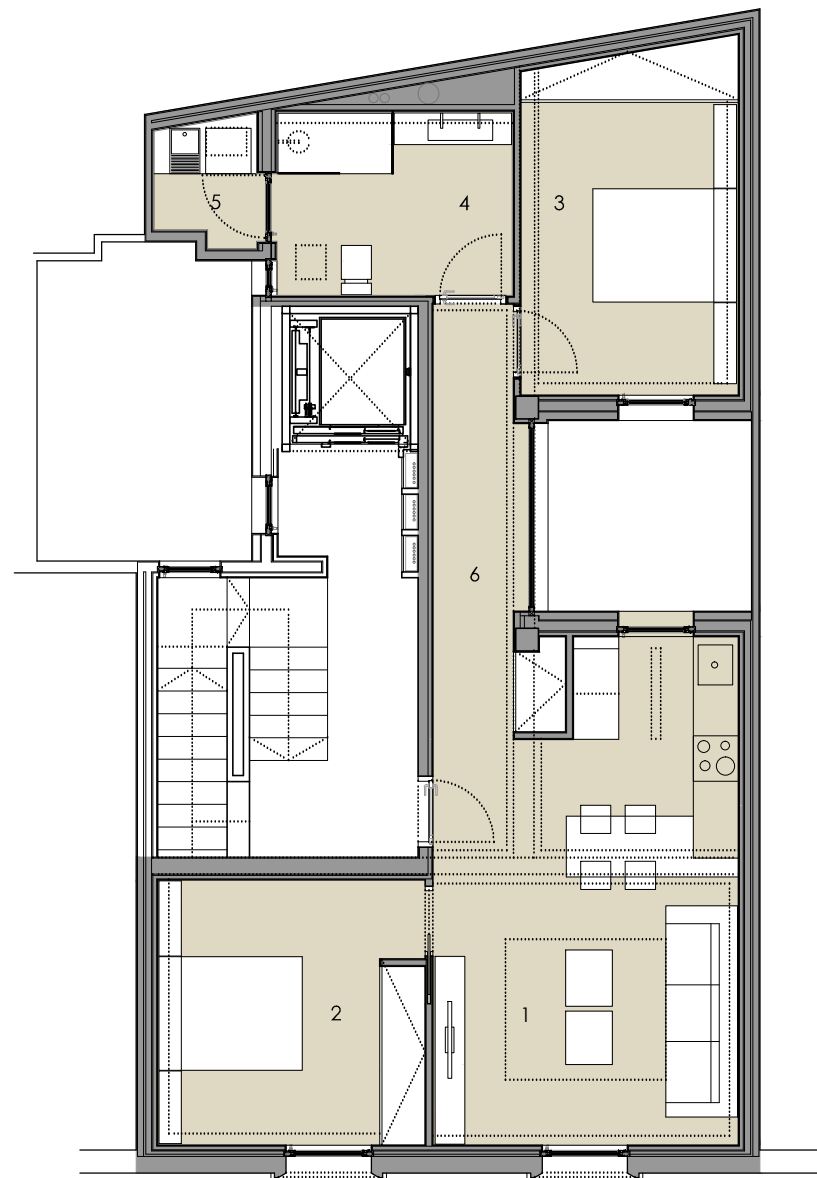


RÚA BRASIL VIGO  
EDIFICIO RESIDENCIAL

VIVIENDA 1A

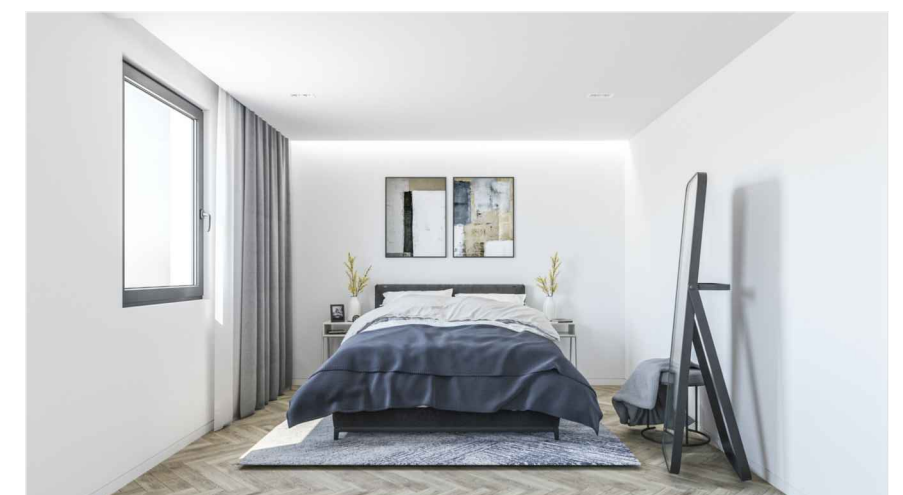
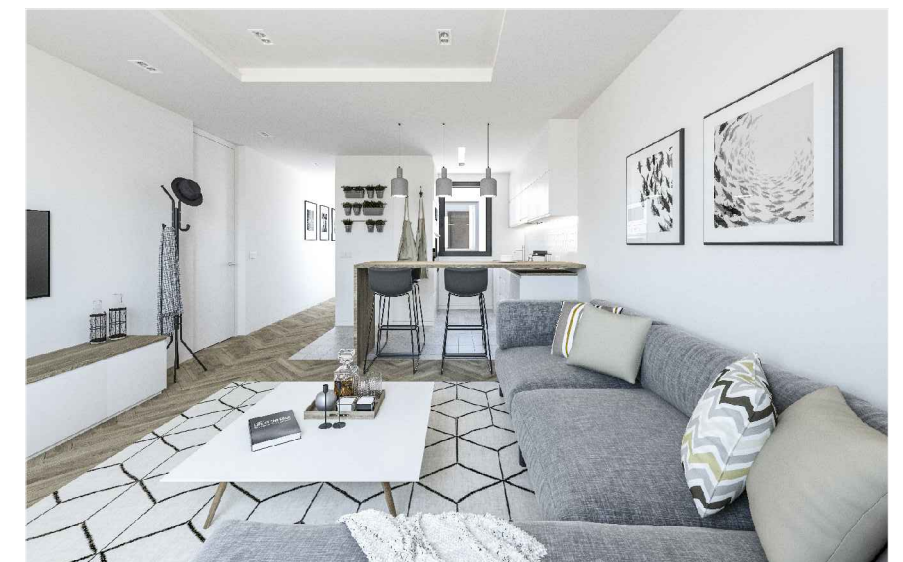
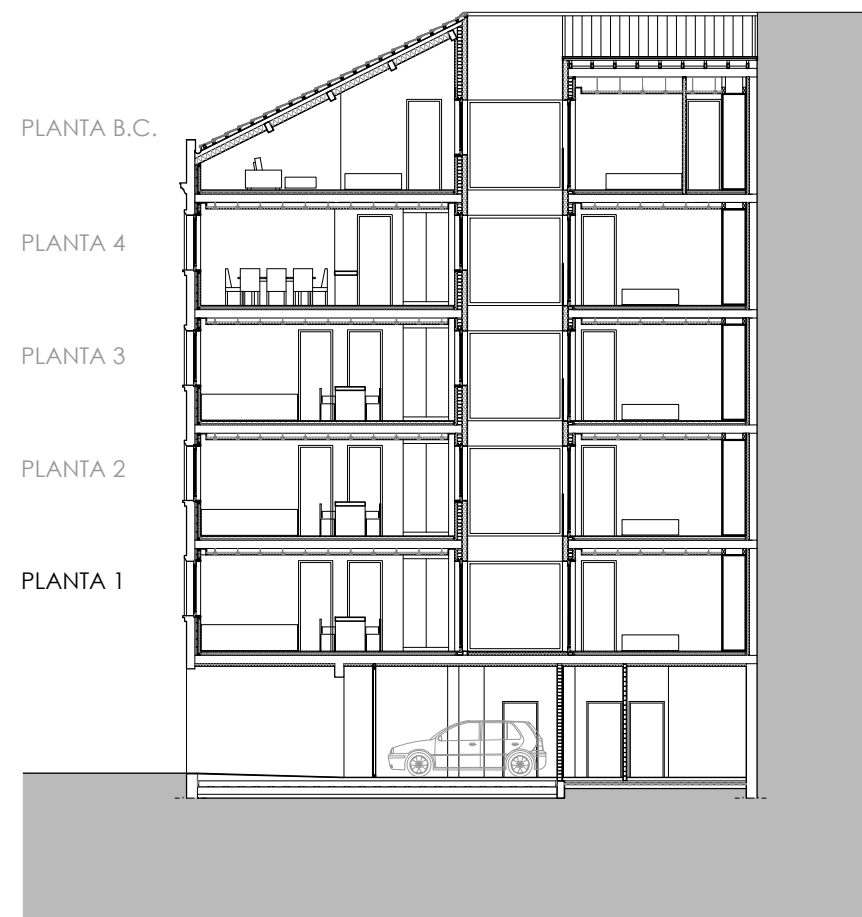
PLANTA 1 : VIVIENDA A  
2 DORMITORIOS + 1 BAÑO

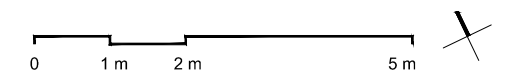
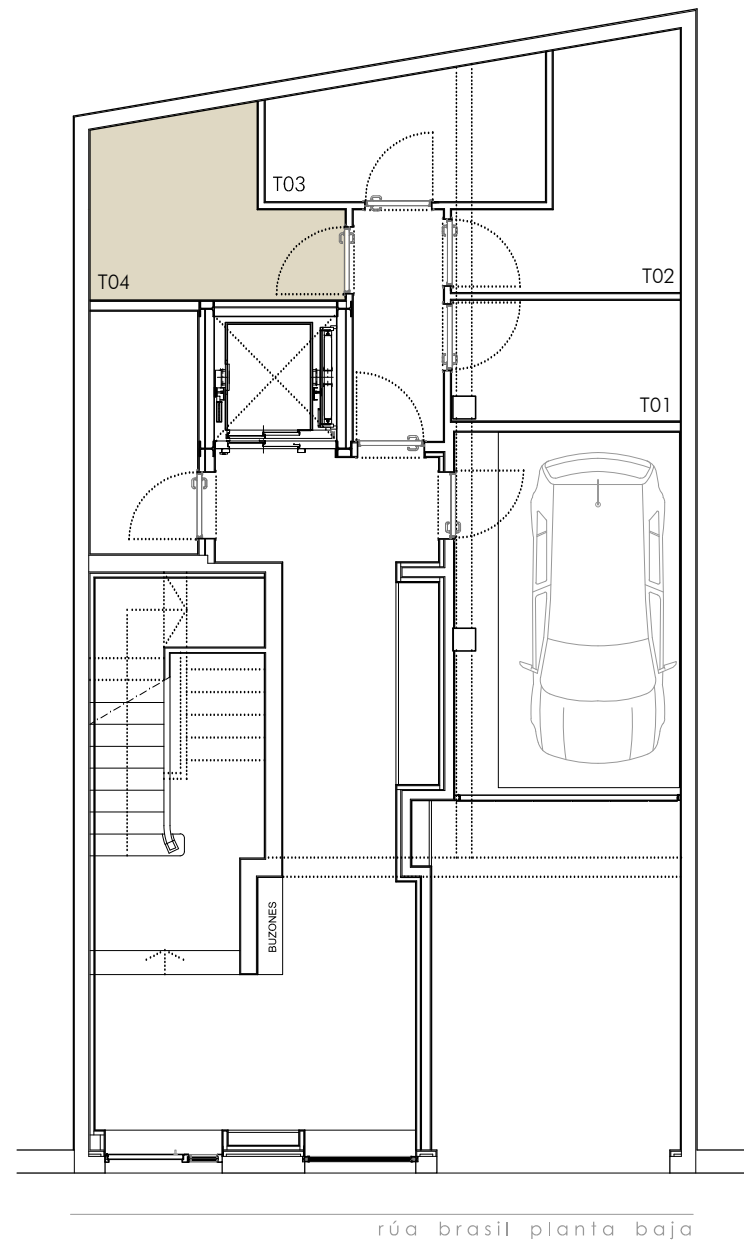
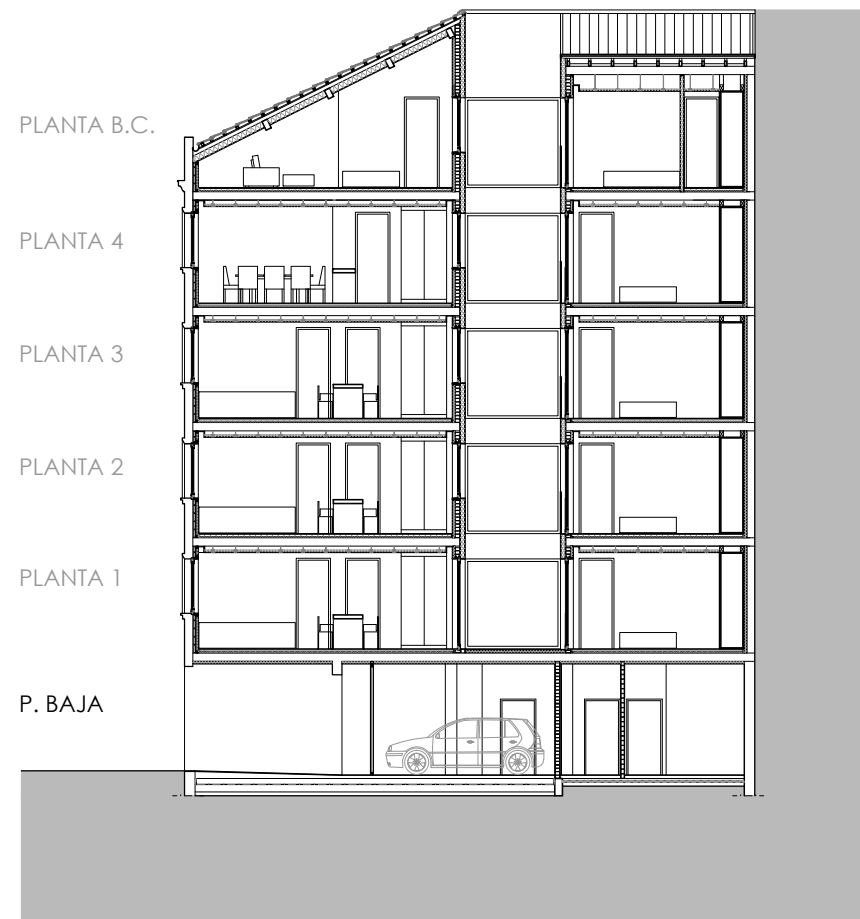
ESTANCIA	SUPERFICIE
1. salón-comedor-cocina	27,25 m <sup>2</sup>
2. dormitorio 1	12,40 m <sup>2</sup>
3. dormitorio 2	13,30 m <sup>2</sup>
4. c. de baño	7,40 m <sup>2</sup>
5. lavadero-tendedero	2,10 m <sup>2</sup>
6. distribuidor	4,75 m <sup>2</sup>
TOTAL SUPERFICIE ÚTIL	67,20 m <sup>2</sup>
TOTAL SUP. CONSTRUÍDA	82,50 m <sup>2</sup>



*Dmanán*

VIVIENDA





*Dmanán*  
VIVIENDA