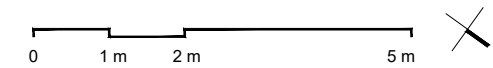
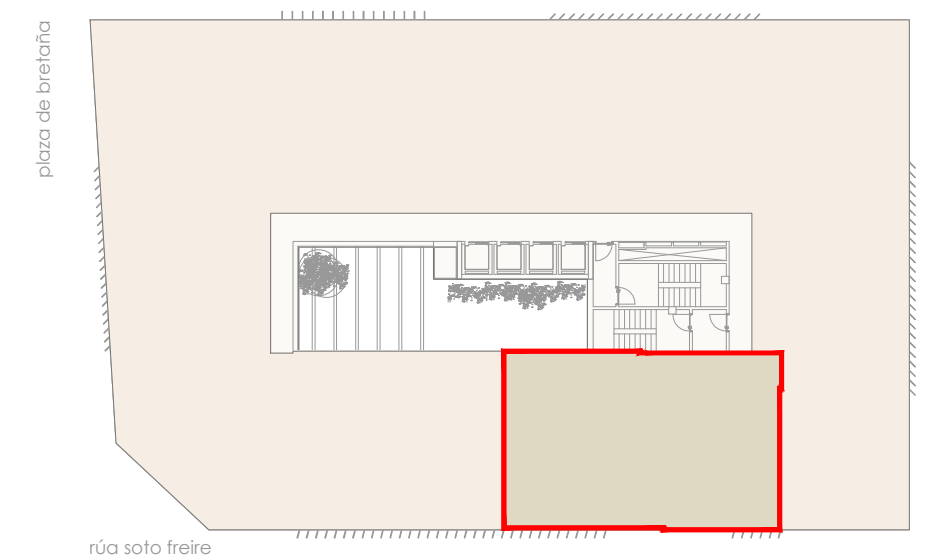
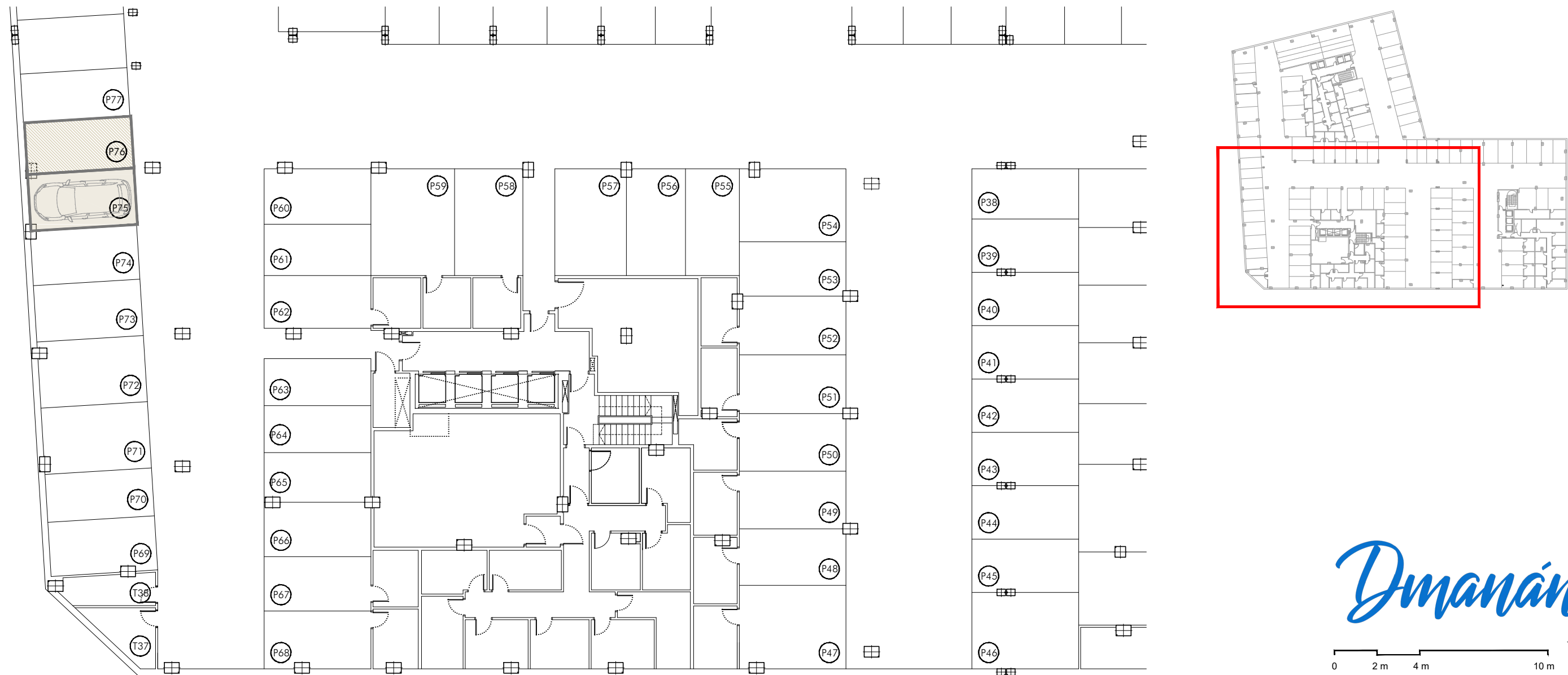


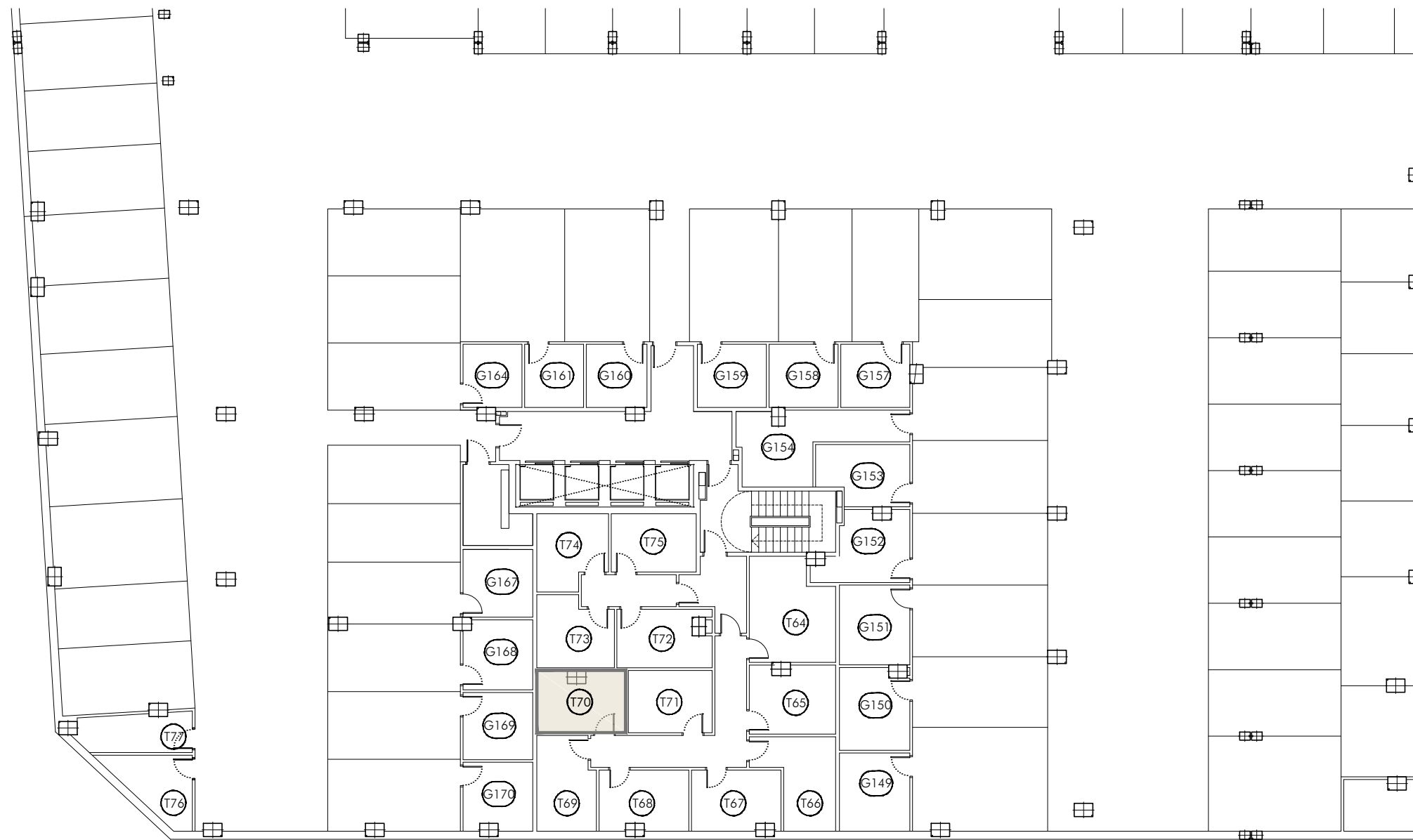
Dmanán



ESTANCIA	SUPERFICIE
1. salón-comedor-cocina	44.60 m ²
2. dormitorio 1	15.10 m ²
3. dormitorio 2	11.45 m ²
4. dormitorio 3	12.40 m ²
5. c. de baño	5.05 m ²
6. c. de baño accesible	5.60 m ²
7. lavadero - tendedero	4.40 m ²
8. espacio almacenamiento	1.00 m ²
9. vestíbulo	2.25 m ²
10. distribuidor	5.60 m ²
11. terraza	11.60 m ²
TOTAL SUPERFICIE ÚTIL	119.05 m²
TOTAL SUP. CONSTRUÍDA	136.70 m²







Dmanán

