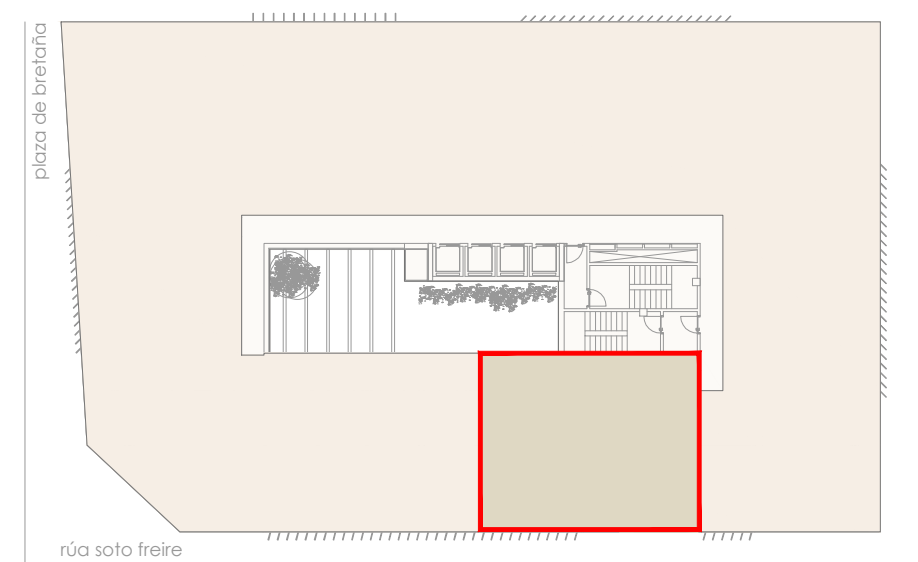
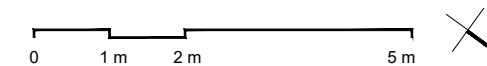
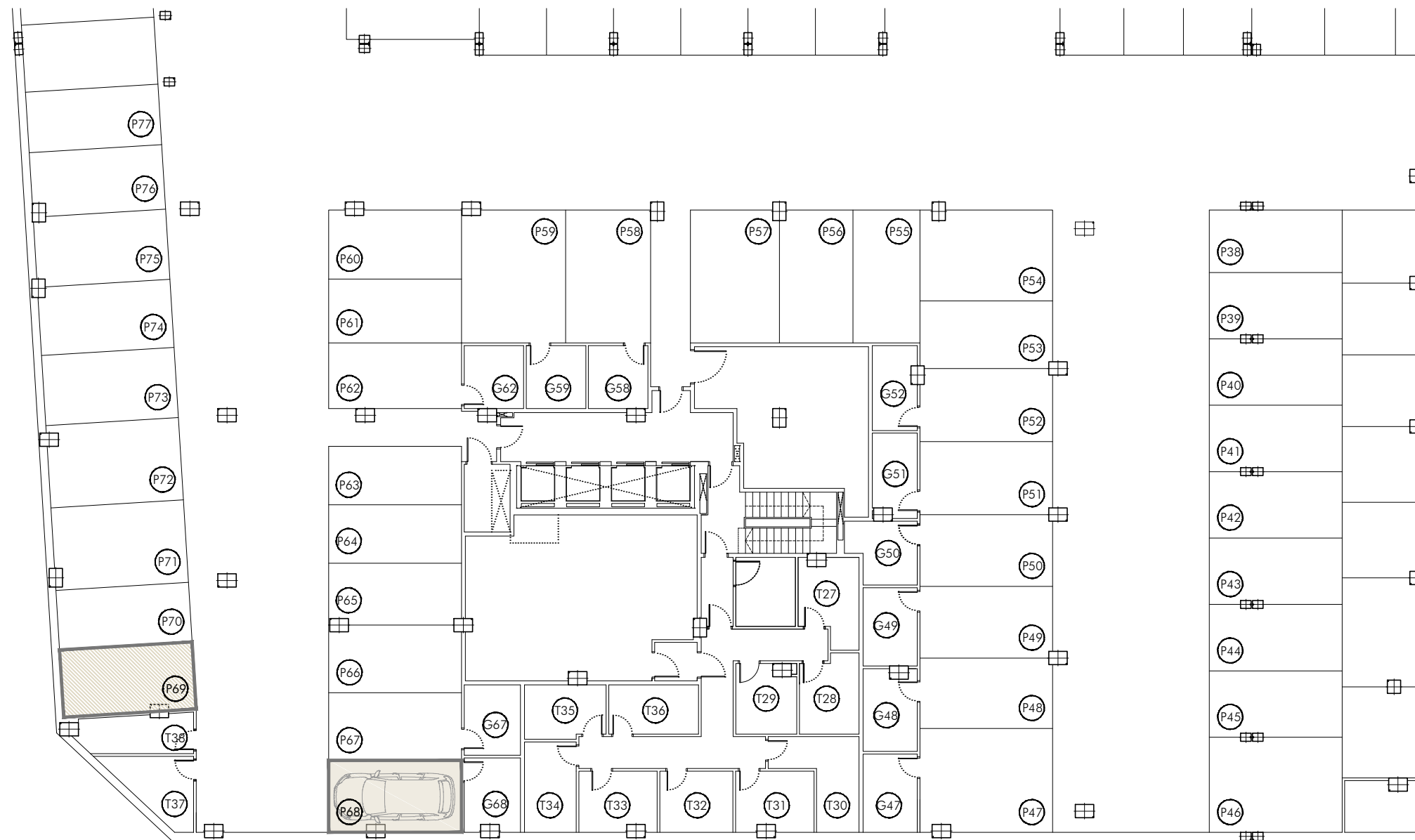


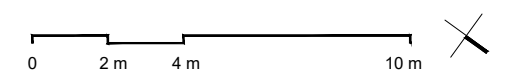
Mañana

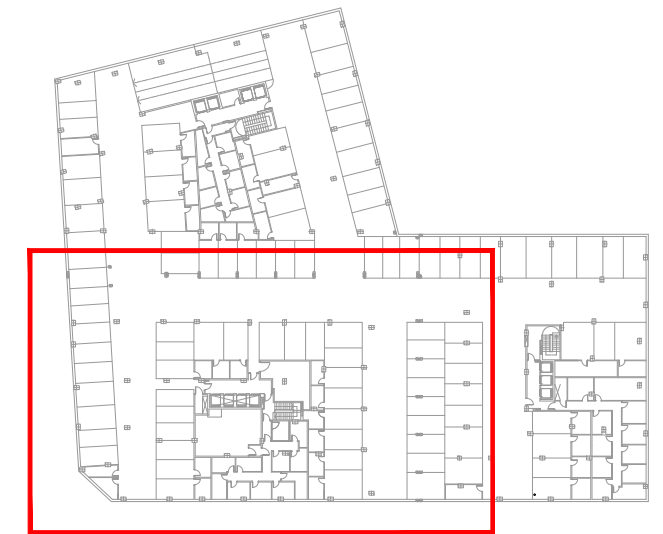
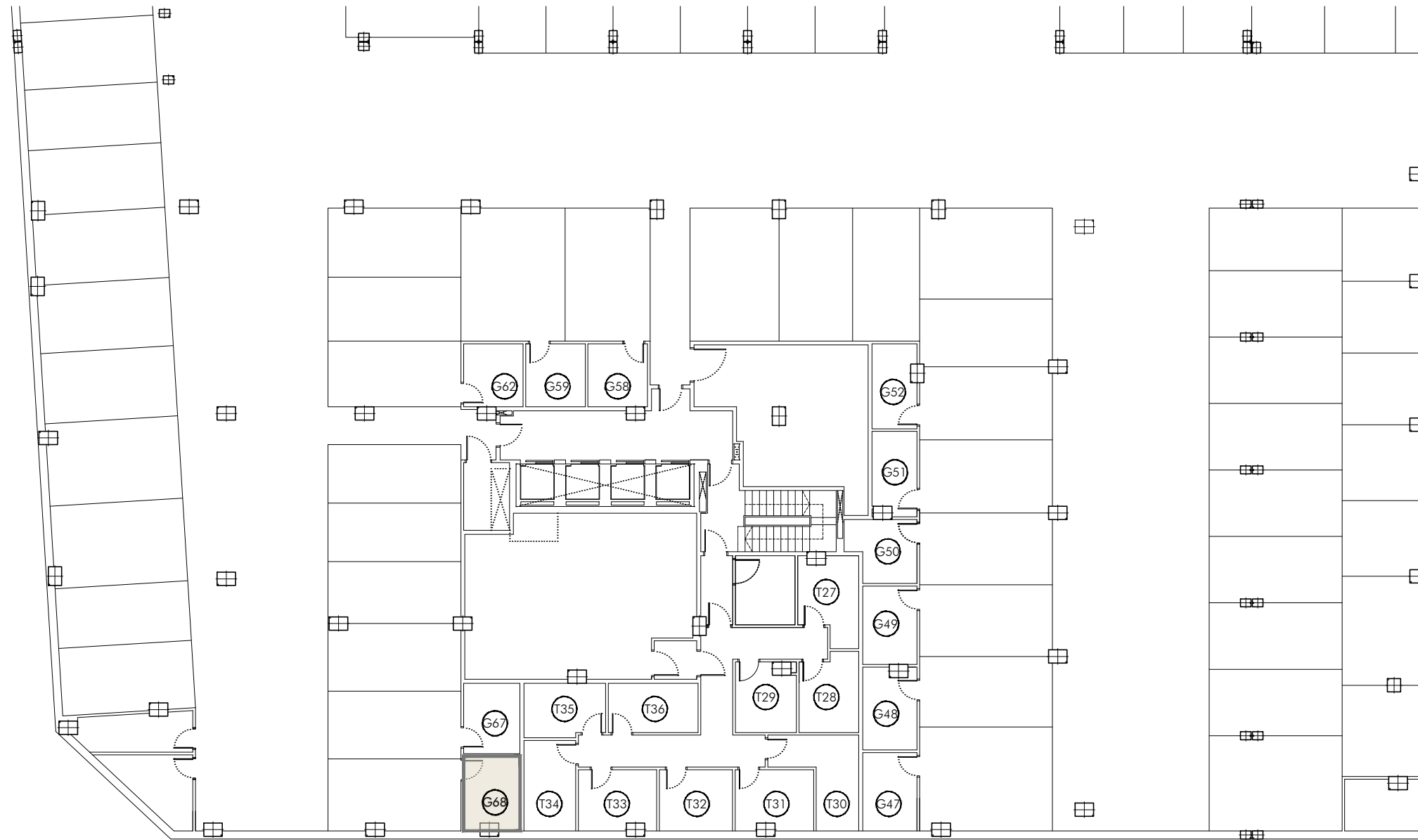


ESTANCIA	SUPERFICIE
1. salón-comedor-cocina	39.35 m ²
2. dormitorio 1	14.45 m ²
3. dormitorio 2	12.25 m ²
4. c. de baño	5.55 m ²
5. c. de baño accesible	5.30 m ²
6. lavadero - tendedero	3.80 m ²
7. espacio almacenamiento	1.00 m ²
8. vestíbulo	2.25 m ²
9. distribuidor	2.85 m ²
10. terraza	9.25 m ²
TOTAL SUPERFICIE ÚTIL	96.05 m²
TOTAL SUP. CONSTRUÍDA	110.40 m²



Dmanán





Dmanán

