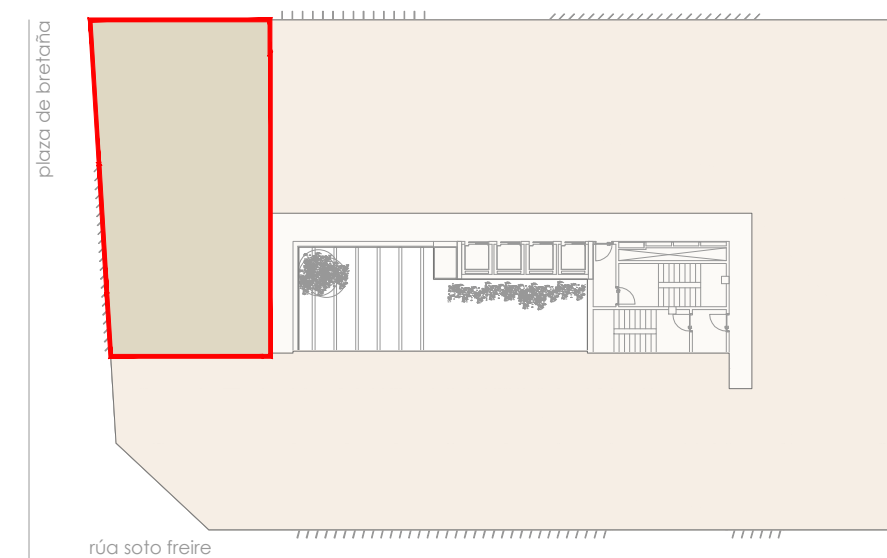
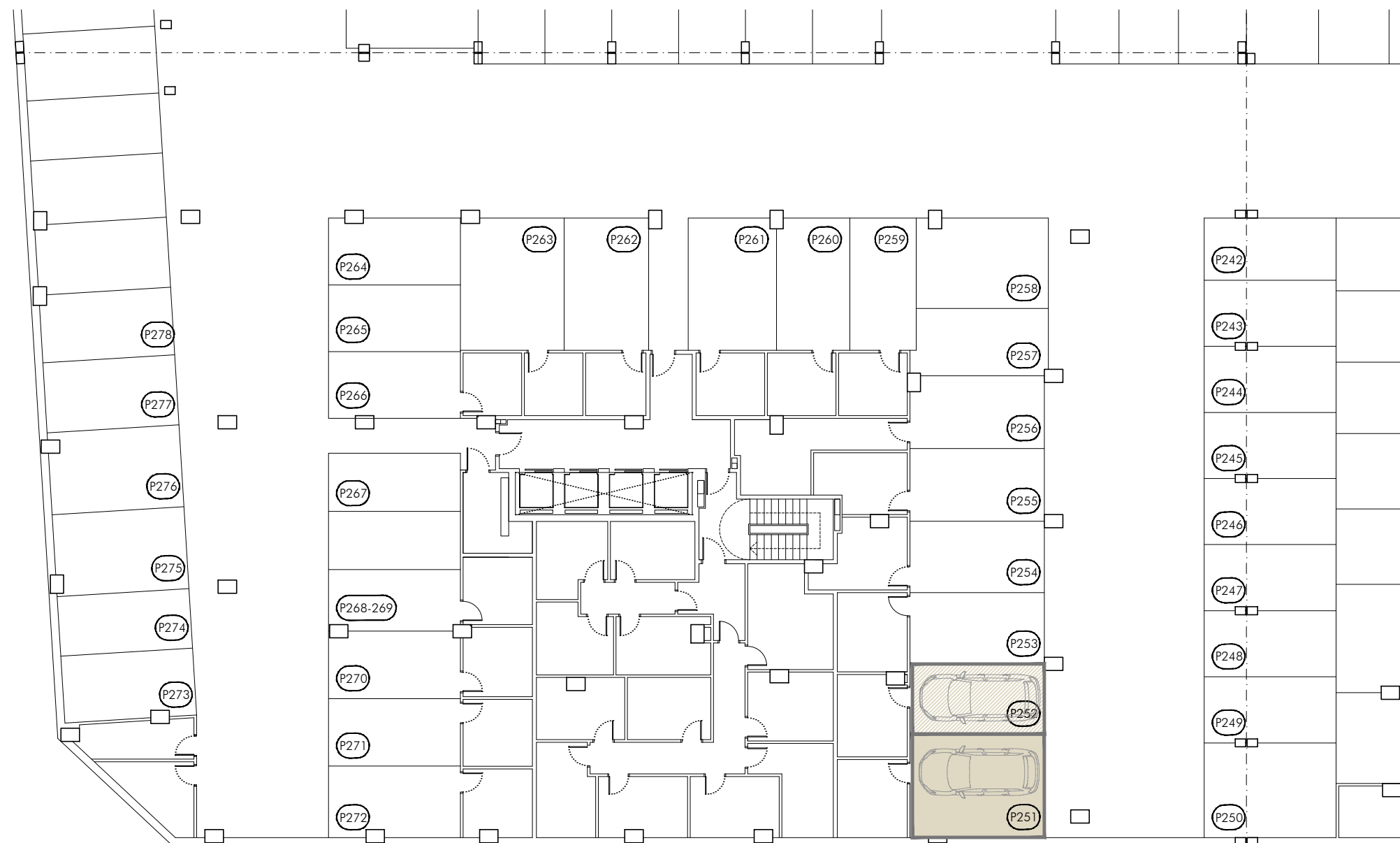


ESTANCIA	SUPERFICIE
1. salón-comedor-cocina	36.35 m ²
2. dormitorio 1	15.00 m ²
3. dormitorio 2	12.35 m ²
4. dormitorio 3	12.30 m ²
5. c. de baño	4.25 m ²
6. c. de baño accesible	5.00 m ²
7. lavadero - tendedero	3.50 m ²
8. espacio almacenamiento	1.05 m ²
9. vestíbulo	2.80 m ²
10. distribuidor	6.60 m ²
11. terraza	38.35 m ²
TOTAL SUPERFICIE ÚTIL	137.55 m²
TOTAL SUP. CONSTRUÍDA	157.50 m²

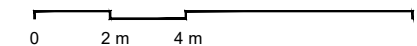
Dmanán

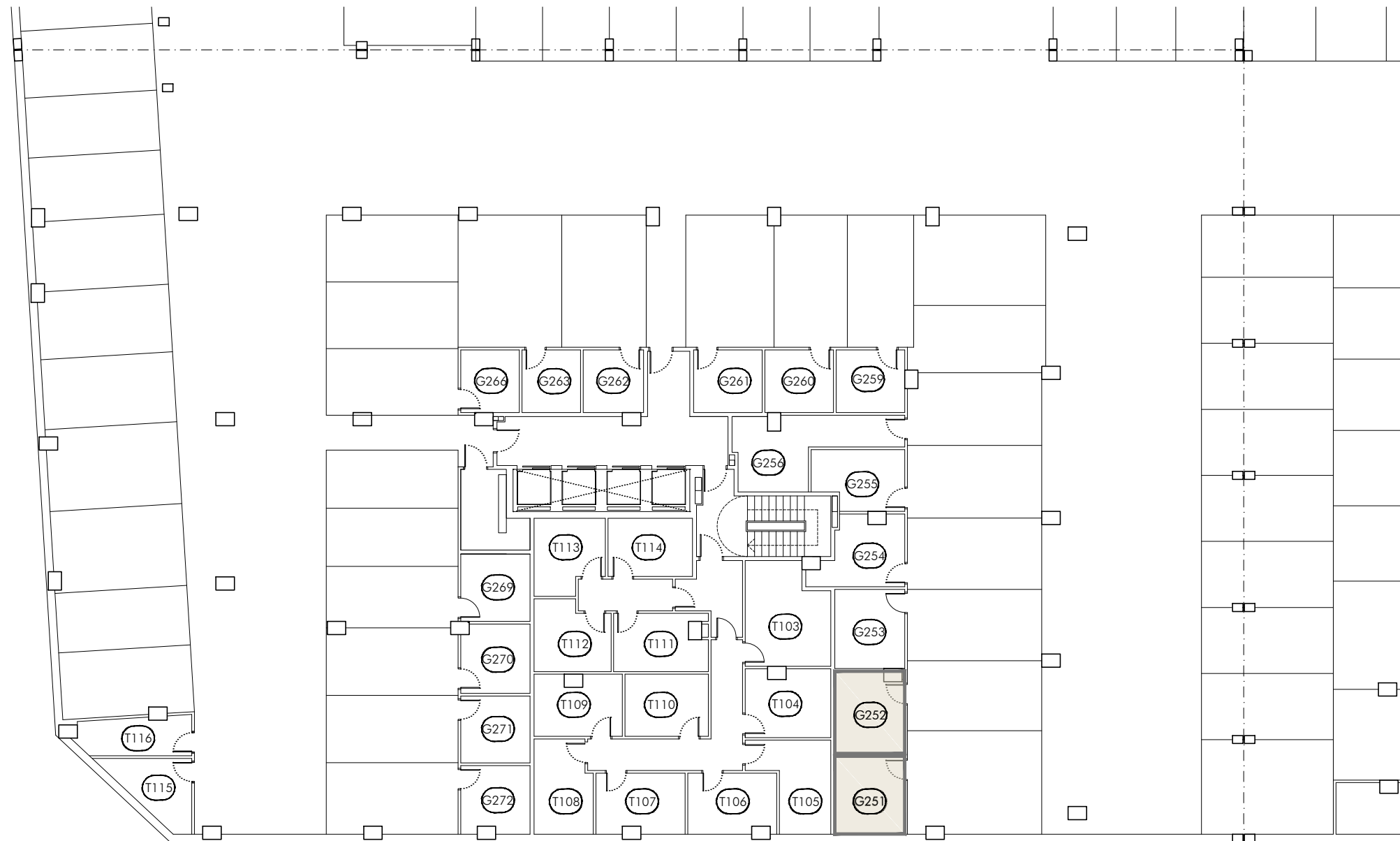
0 1 m 2 m 5 m





Dmanán





Dmanán

